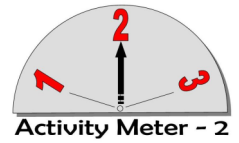




New England Autumn Adventure

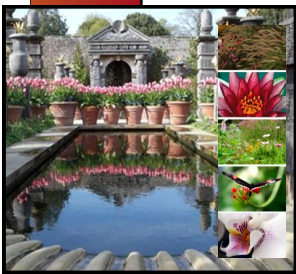
9 Days: September 21-29, 2012



This travel package planned and escorted by Becky DeKruif.

You've always wanted to visit New England in the fall! Here is your chance to join us on a great autumn adventure!

September 21 we pick up passengers at our scheduled departure cities. Relax and enjoy the ride, as we travel to Elkhart, IN. We'll check into our motel and you can either relax or enjoy dining at one of several nearby restaurants.

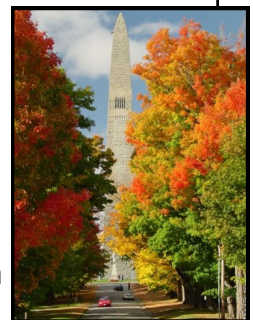


September 22 after **breakfast** we head eastward, stopping for a tour at the **Cleveland Botanical Gardens**. Founded in 1930, it features 20 exquisite specialty gardens and exotic indoor biomes. Explore the beautiful surroundings at your leisure. We are fortunate to arrive during the **RIPE food festival**, where "locavores", people who support locally-grown foods, are displaying and offering their products for sale. There is also a café where you can enjoy lunch at your leisure before departing. The scenery changes as we approach the **Buffalo, NY**, area, where we will stop at a motel that includes many amenities, as well as a shuttle service (as available) to places within 5 miles. (Make your arrangements with the front desk.) If you prefer to relax, the motel has a restaurant on site.

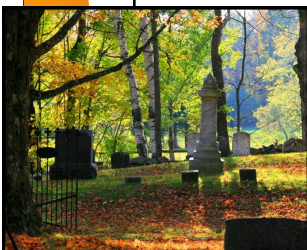
September 23 enjoy **breakfast** before we once again head eastward. We'll stop in Le Roy, NY, for a private visit to the **Le Roy Mansion** and the **Jell-O Museum**. (Not normally open on a Sunday morning, we will have the sites to ourselves.) The Le Roy Mansion is a historic home, built in 1822, by Jacob Le Roy. You will enjoy over 100 years of history, in a home that later became the residence of the Chancellor of Ingham University, the first female university to offer a 4-year degree. At the same stop, enjoy the unique Jell-O Museum, where you will find Jell-O advertising and marketing through the years, fun facts, Jell-O molds, paintings and a gift shop. Our eventual destination for the night is Bennington, VT. On arrival, enjoy a delicious **dinner** at our resort.



September 24 after **breakfast** depart for a day of touring Vermont, enjoying the splendid foliage and countryside. Begin with a **guided tour of Bennington, VT**. Enjoy a visit to the **Bennington Battle Monument** and view the **Old Bennington**



Cemetery where Robert Frost is buried. Continue north to **Middlebury** for some free time and lunch on your own. This afternoon, continue on for a visit to the **Vermont Teddy Bear Company factory** for a fun-filled tour to see how the "Best Bears in the Universe" are born! We'll finish the day off with a visit to **Cold Hollow Cider Mill**. A Vermont legend since 1974, the mill is New England's largest producer of apple cider.



Reservations & Info: 1-877-694-8687 or www.northlandtravel.com

Watch cider-making and enjoy free samples, along with other Vermont specialty foods. This afternoon, we'll check into our northern Vermont hotel for the night and enjoy a delicious **dinner**.

September 25 we'll begin the day with **breakfast** and a visit to **Morse Farm Maple Sugarworks** for a demonstration and "sugar on snow" experience (maple syrup served over shaved ice), along with an opportunity to browse through the gift shop. Then it's up to the **White Mountains of New Hampshire**. We'll visit the



Franconia Notch State Park and enjoy a **scenic aerial tram ride up Cannon Mountain**. At the top, enjoy the spectacular views and glorious foliage colors. Later, arrive to the **Mount Washington Cog Railway station and visitor center**. Board the world's first mountain-climbing cog railway for a 3-hour round trip **ride to the summit** of Mount Washington. Enjoy the magnificent views, sights and sounds of this unique steam locomotive in action, as we journey on some of the steepest railway tracks in existence. Take some time

to explore the summit before returning down the mountain. Later this afternoon, check into our North Conway hotel. Take some time to relax and enjoy the resort amenities, before enjoying a delicious **dinner** tonight.

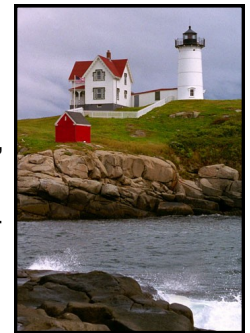
September 26 following **breakfast** we'll enjoy a spectacular day of touring through **New Hampshire's Lakes Region**. Start with a visit to **Castle in the Clouds**, millionaire shoemaker Thomas Plant's spectacular Arts & Crafts mansion, built in 1914 by over 1200 craftsmen at a cost of over \$1 million. This New Hampshire icon is wonderfully preserved to give a real sense of how country life was lived at the turn of the century by the fabulously wealthy. Then, continue on to Weir's Beach to board the **MS Mount**



Washington for a scenic **luncheon cruise** on Lake Winnepesaukee, the state's largest and perhaps most beautiful lake. This afternoon, continue to Portsmouth, NH, where we'll check into our hotel and take some time to freshen up before visiting one of the most photographed lighthouses in the country—**Cape Neddick Lighthouse**, popularly known as "the Nubble." We'll



end the day with a traditional east coast **clambake** and chance to try Maine lobster!



September 27 after **breakfast** we say good-bye to New England and head west. Later, enjoy **lunch** at a waterfront restaurant and perhaps a little shopping at the local village, then board a comfortable boat for a **90-minute excursion on the Erie Canal**. The **narrated tour** (voted among the top 25 narrated tours in the country) takes us through guard gates, past the second oldest church in New York state, and through a 100-year-old lock - which still uses original equipment - to enter the Mohawk River. After our relaxing boat ride, we head westward again to our overnight stop in the Buffalo area.

Reservations & Info: 1-877-694-8687 or www.northlandtravel.com

September 28 after **breakfast** and some road time, we will stop in Erie, PA, to tour the **Erie Maritime Museum**, home of the reconstructed Flagship Niagara. Knowledgeable museum guides tell us about the history of the Niagara, its role in winning the Battle of Lake Erie during the War of 1812 and about the rich maritime heritage of the region. If the Flagship Niagara is in port during our visit, you may board the ship and have a look around (or look around the gift shop, too!). We are back in Elkhart, IN, for the night. Plenty of restaurants are within easy walking distance, or just relax if you wish.



September 29 after **breakfast** we head for home, but not before enjoying a **tour** of the **South Bend Chocolate Company**. Our **guide** tells us about the history of chocolate and shows us how it is made. There will be **sampling** and time to purchase chocolates in the gift shop. We arrive home later today and say goodbye to our fellow passengers, concluding our unique sampling of New England in the fall!

Your 9-day New England Autumn Adventure package includes: Luxury motorcoach transportation, lodging for 8 nights, luggage handling, admissions/tickets to bolded attractions, local step-on guides, 8 breakfasts, 2 lunches and 4 dinners (meals inclusive of tax and gratuities).

\$2,185 per person double occupancy

\$2,049 per person with 3 or 4 people sharing a room with 2 beds

\$2,655 single room accommodations



Deposit: \$225 per person, due with reservation. If deposits are not received within 10 business days, reservations may be cancelled without notice.

Balance due: August 22

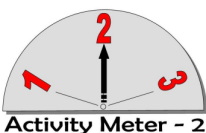
Cancel by: August 22 for penalty-free cancellations

Delayed reservation fee: after August 22, a reservation for this trip requires an additional \$50 per person.

Peace of Mind Protection: 5% of trip cost, due with deposit or affordable travel insurance is available at a group rate. Please call our office for more details.

Scheduled Departure Cities: Ames, Cedar Rapids, Clear Lake, Coralville, Decorah, Des Moines, Fort Dodge, Newton and Waterloo

When circumstances arise beyond our control, NorthLand Travel reserves the right to make itinerary changes.



Moderate itinerary – some standing or stairs, a few blocks of walking



Reservations & Info: 1-877-694-8687 or www.northlandtravel.com